

BMIC
PROPERTY
BUILD - MANAGE - CREATE

TO RENOVATE 2 HOUSES

CAVEZ, CABECEIRAS DE BASTO



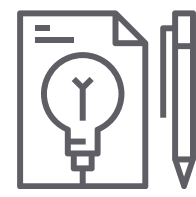
Who we are

At BMC Build, we believe that great ideas deserve more than just plans , they deserve action. We invest with strategy, build with vision, manage with excellence, and create with purpose. Whether it's structuring financial businesses, legal advisory, asset management, or real estate consultancy, we deliver tailored, discreet solutions with a focus on real results.



We create tailored solutions:

- Innovative investment projects, aligned with your goals, and wealth structures, driving sustainable growth.



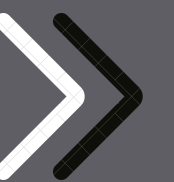
We manage with precision and purpose:

- Family wealth, ensuring continuity and protection and financial assets, with a focus on performance and stability.



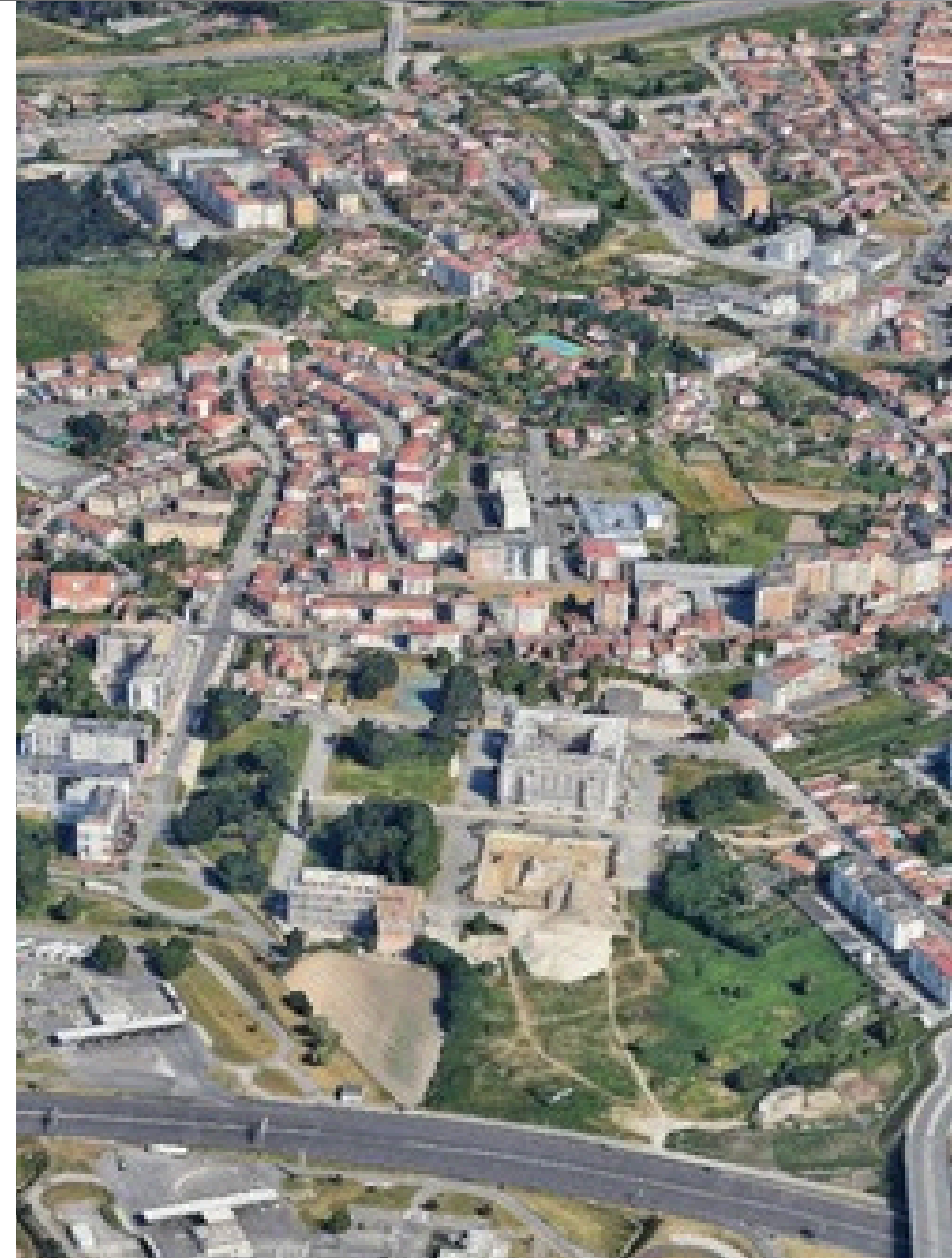
We create connections in the real estate market:

- Property brokerage with tailored solutions, and real estate asset management, ensuring appreciation and security.



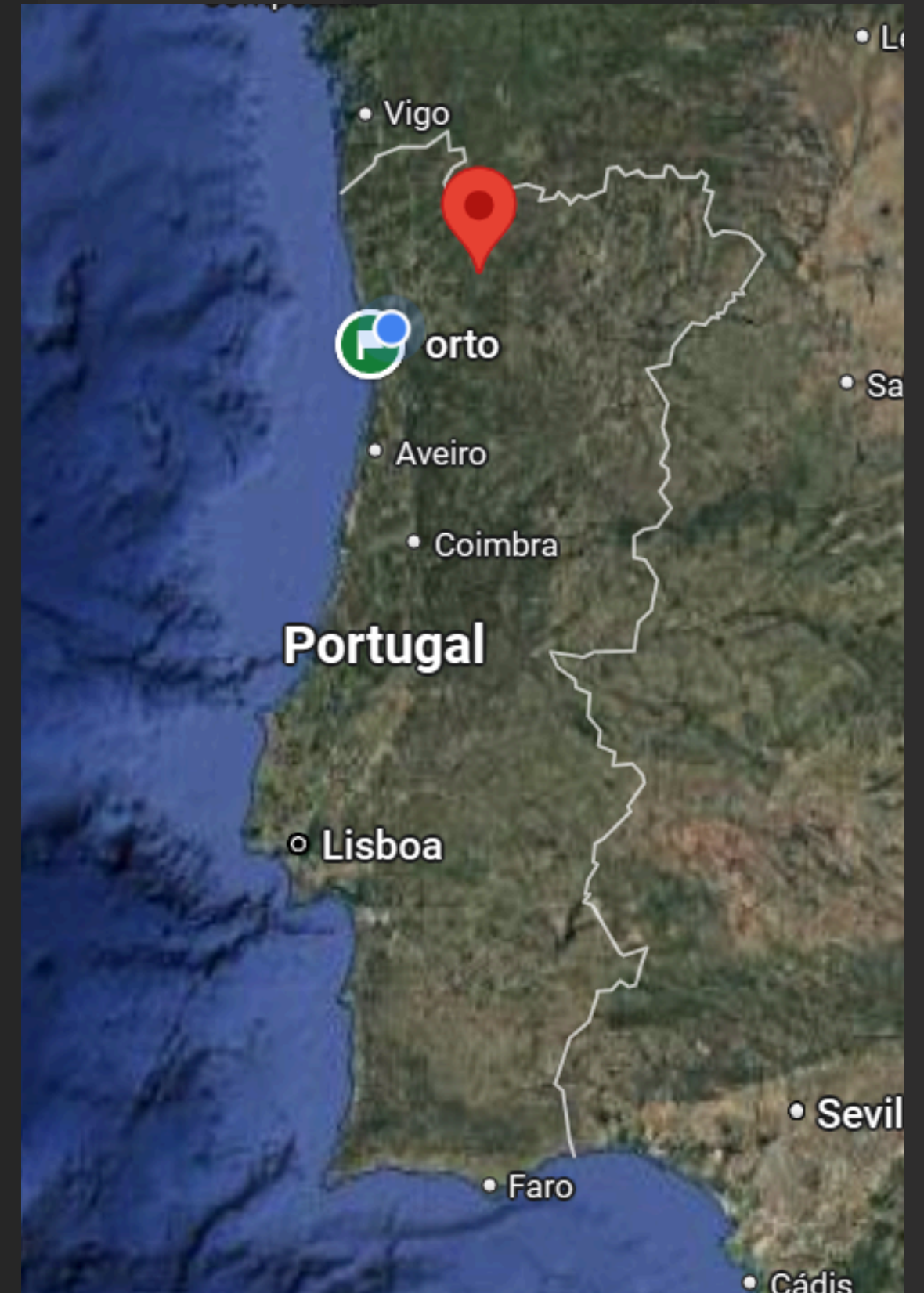
CABECEIRAS DE BASTO

Cabeceiras de Basto, in northern Portugal, is an emerging location for tourism, investment, and real estate. With natural landscapes, historical heritage, and rich traditions, it attracts visitors seeking authenticity and peace. The real estate market offers affordable opportunities, ideal for rural tourism or property renovation. It's a region with strong potential for those looking to invest outside major urban centers, offering quality of life and sustainable growth.





CABECEIRAS DE BASTOS
ON THE MAP





BMC
PROPERTY
BUILD - MANAGE - CREATE

2 HOUSES TO RENOVATE

AMI 25356 | ID: L7I0031



DESCRIPTION:

Plot with Two Houses to Renovate in Cavez – Cabeceiras de Basto

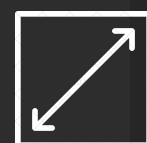
Excellent investment opportunity in Cavez, Cabeceiras de Basto! This property includes two buildings for renovation, with great potential for local accommodation or a secondary home.

The property features:

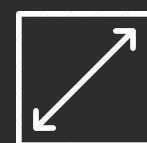
- A 30 m² covered stone outbuilding, ideal for storage or conversion into a support space;
- A two-storey house (ground floor + first floor) with a total area of 50 m², ready to be transformed to your taste;
- Surrounding land with good sun exposure, in a peaceful area with easy access.

Located in a growing tourism area, this property offers great value and is perfect for those looking for a countryside retreat in northern Portugal or a charming rural investment for local tourism.





1 500M2



30M2 + 50M2











IBMIC
PROPERTY
BUILD - MANAGE - CREATE

Contact us

(+351) 938 748 148

(+351) 927 999 025

property@luso7invest.com

www.luso7invest.com





BMC

PROPERTY

BUILD - MANAGE - CREATE

THANK YOU